The background of the slide is a photograph of an antique book cover. The cover features a complex marbled paper pattern with organic, cell-like shapes in shades of blue, green, and brown. The spine of the book is visible on the left, bound in worn, reddish-brown leather. Several white rectangular labels are pasted onto the cover, containing text in a black, serif font. The main title of the slide is overlaid on the top right of the image.

FIELD BOOKS AND OTHER IMPORTANT BOUNDARY MATERIALS, ARCHIVAL COLLECTIONS IN SCIENCE MUSEUMS

SAA MUSEUM ARCHIVES SECTION STANDARDS AND BEST PRACTICES WORKING GROUP
2018 ANNUAL SYMPOSIUM

PUPA
REBECCA MORGAN, AMERICAN MUSEUM OF NATURAL HISTORY

Sc
WEDNESDAY, AUGUST 15, 2018




BOUNDARY MATERIALS – WHAT ARE THEY?

- **Active records that sit on the border of Museum and Archival Practice.**
- **They function as objects that are situated between professions and disciplines**


* Michael Jones, 'From personal to public: field books, museums, and the opening of the archives, Archives and Records,' Archives and Records. Vol. 38,






2005-2007

IMLS RISK ASSESSMENT
Research Collections



2009-2012

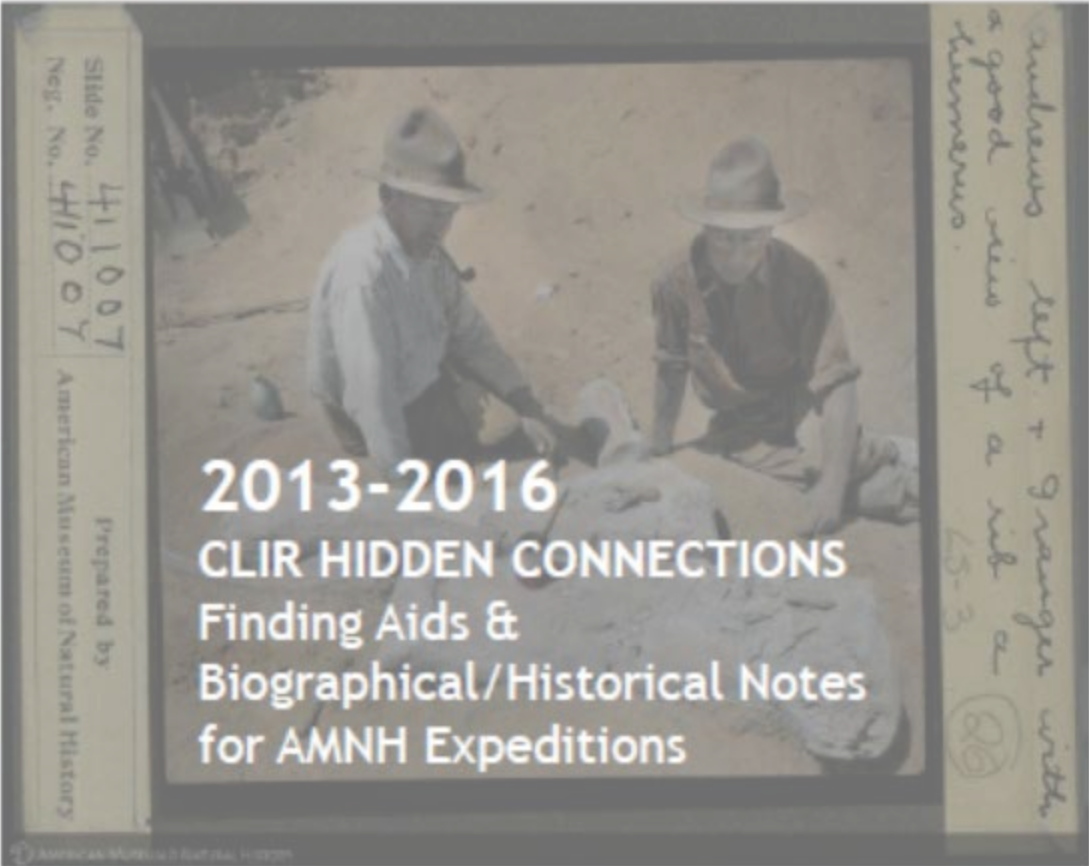
IMLS RISK ASSESSMENT
Permanent Exhibits



2011-2012

IMLS RISK
ASSESSMENT &
INVENTORY
Library & Archives
in Science

CLIR HIDDEN
COLLECTIONS
Catalog Library
Archives



2013-2016

CLIR HIDDEN CONNECTIONS
Finding Aids &
Biographical/Historical Notes
for AMNH Expeditions

Slide No. 411007
Neg. No. 411007

Prepared by
American Museum of Natural History

*includes left + right with
a good view of a rib or
femur.
65-3
(2)*



**More than 3,000 collections
25,000 linear feet of archives
...in AMNH SCIENCE**

including many hundreds of field books...



CLIR HIDDEN COLLECTIONS PROJECT

DESCRIBING AMNH'S COLLECTIONS



AMERICAN MUSEUM OF NATURAL HISTORY

“Mayr, Coultas, Eyerdam, and Hamlin on deck of schooner the France off Choiseul Island, Solomon Islands, 1929,” Hamlin, H., *AMNH Digital Special Collections*

<http://images.library.amnh.org/digital/index.php/items/show/20271>.

Expeditionary Field
Work at the
American Museum
of Natural History
2013-2016

- Finding aids for archival collections
- Entity records for expeditions and personnel



CONNECTING COLLECTIONS THROUGHOUT SCIENCE DIVISIONS

What did they bring back?

- Specimens and artifacts
- Notes and sketches
- Diaries
- Journals
- Specimen books
- Photographs
- Recorded sound
- Moving images

Archival records and specimens for the Whitney South Seas Expedition were found in three divisions of Science

- Anthropology
- Vertebrate Zoology
- Research Library



AMERICAN MUSEUM OF NATURAL HISTORY

“Rollo H. Beck and ship engineer in workshop with frigate bird specimen, aboard schooner the France,” Beck, R. H., *AMNH Digital Special Collections*, <http://images.library.amnh.org/digital/index.php/items/show/8681>



LEON LEVY FIELD NOTES CATALOGING PROJECT, 2015-2016



**Hornbill. Study of Adult male.
Solomon Islands, November 1927.
Frederick P. Drowne.**

**Drowne's Letters and Journal: 1927-
1928.**

Before you scan you must describe!

Archival Collection Scope:

- Archbold Expeditions, 53 items (Mammalogy)
- Whitney South Seas Expedition, 54 items (Ornithology)
- First Asiatic Expedition, Diary of Edmund Heller, 1917-1918, 1 item (Research Library)

Criteria for Field Book selection:

- Unique primary source material
- Mainly bound items



**CLIR
BIODIVERSITY HERITAGE
LIBRARY FIELD NOTES
PROJECT, 2016-2017**



Hand-colored art from the typescript field book of Frederick P. Drowne, 1927

Project Goal:

Increasing accessibility to original scientific documentation through the digitization of entire collections of archival field notes.

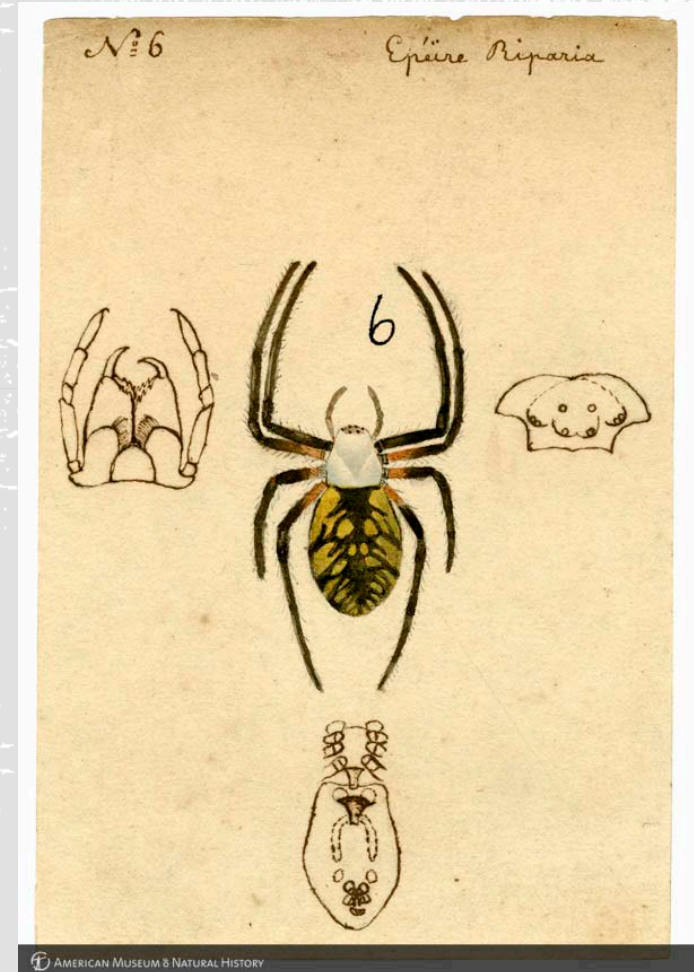
Project Description:

Coordinate work to digitize field notes, assign metadata, and publish the field notes online through the Biodiversity Heritage Library and Internet Archive, DPLA keep a local copy in our digital repository.



EACH TOUCH OF THE COLLECTIONS BUILDS TRUST

- Workflows for borrowing materials from departments
- Item Barcoding and Call Numbers
- Separation sheets
- Good Collection Management:
 - Conservation survey of materials
 - Creation of Item and Collection Level catalog records
 - Creation cataloging templates, best local practice documentation



AMERICAN MUSEUM OF NATURAL HISTORY

“Epeira Riparia, painting by Nicholas Marcellus Hentz,” *Research Library | Digital Special Collections*

EACH TOUCH OF THE COLLECTIONS BUILDS TRUST

What's Next?

Brown Bag Lunch Meeting – Overview of online resources

Ingest of Collection level inventories into our Catalog and ArchivesSpace.

Offering some reference support

Invited into cross museum grant efforts, wax models

Collections we identified long ago continue to come in as transfers.



Artist's rendering, interior view from entrance, proposed plan for Whitney Bird Hall, 1944," *Research Library | Digital Special Collections*, neg. 22757.



[Logbook of the yacht "France"]

v.1 (1922-1927..)

Download Contents



Pages

- Pages 6,Pages 7 (Text)
- Pages 8,Pages 9 (Text)
- Pages 10,Pages 11 (Text)
- Pages 12,Pages 13 (Text)
- Pages 14,Pages 15 (Text)
- Pages 16,Pages 17 (Text)
- Pages 18,Pages 19 (Text)
- Pages 20,Pages 21 (Text)
- Pages 22,Pages 23 (Text)
- Pages 24,Pages 25 (Text)

[Show More](#)

URL for Current Page

<http://biodiversitylibrary.org/page/51514498>

Scientific Names on this Page

Pages 14,Pages 15 (Text)
No Scientific Names found



4 Columns



Show
OCR



Contributed by [American Museum of Natural History Library](#)





Search the collection

Search

63 results

Sort by

Relevance



Items per page

20



Layout



Filtered by

provider: American Museum of Natural History Library x

subject: Field notes x

x Clear all filters

subject: Whitney South Sea Expedition of the American Museum x

Refine your search

Type	—
text	63
Subject	—
(1920-1941)	63
Field notes	63
Scientific Expeditions	63
Whitney South Sea Expedition of the American Museum	63
Travel	59
Birds	57
Description and travel	54
France (Schooner)	20
Macmillan, Lindsay	17
Coultas, William F	16
59.82(9)	11
Date	—

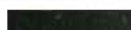
Create a list from these items



[Whitney South Sea Expedition mammal catalogue]
 Whitney South Sea Expedition of the American Museum of Natural History, 1920-1941
[View Full Item](#) in American Museum of Natural History Library



Field notes on the birds of New Caledonia
 Macmillan, Lindsay
[View Full Item](#) in American Museum of Natural History Library



[Field guide]

DPLA

Digital Public Library of America





Research Library | Authorities

The American Museum of Natural History Library is pleased to provide descriptions of museum related individuals and other entities, such as expeditions and exhibitions. These authoritative, Museum-specific descriptions are woven together through a network of relationships, providing the backdrop and structure for documenting the Museum's history and the history of natural science. Related archival materials' descriptions are linked through this rich network, allowing researchers to discover related, primary source material through an interconnected system.

XEAC

local entity
database



Whitney South Sea Expedition of the American Museum of Natural History (1920-1941) [Alternative names](#)

Dates: **Language:** English

Establishment 1920
Disestablishment
1941

History notes:

The Whitney South Sea Expedition of the American Museum of Natural History was an ornithological expedition originated by Dr. Leonard C. Sanford and funded by Harry Payne Whitney. Their mission was to systematically explore the many islands of Polynesia, Melanesia, and Micronesia for previously undiscovered or little-known bird specimens. At the time it was the most expansive ornithological expedition ever conceived, and active field research would last over two decades, from 1920 to 1941. During that span, five men acted as leader, assisted by scores of participants. In addition to bird specimens, botanical and anthropological specimens were also gathered. Participants additionally photographed their regions of exploration, drew maps and kept detailed diaries and notes on their voyages.

The expedition was the brainchild of AMNH trustee Dr. Leonard C. Sanford. He was a surgeon and professor at the Yale University Medical School who was also an avid bird collector and patron of ornithological study (1, p. 90). Sanford envisioned a series of voyages to explore and collect on the islands of the South Pacific(1, p. 90). As designed, such a methodical and prolonged undertaking would prove to be costly. Sanford recruited his friend, the financier Harry Payne Whitney to act as the expedition's sponsor.

With funding secured, AMNH staff could begin planning. Museum

Links to collections

- [Archival Collections](#) **8**
- [Related Resources](#) **0**
- [Related External Links](#) **2**

Related names in SNAC

- [People](#) **13**
- [Families](#) **0**
- [Organizations](#) **2**

Constellation Options

Information

- [Collection Locations](#)
- [Detailed View](#)
- [Constellation History](#)
- [Source Summary](#)

Visualizations

- [Connection Graph](#)
- [Radial Graph](#)

Export As

- [Constellation JSON](#)
- [EAC-CPF XML](#)

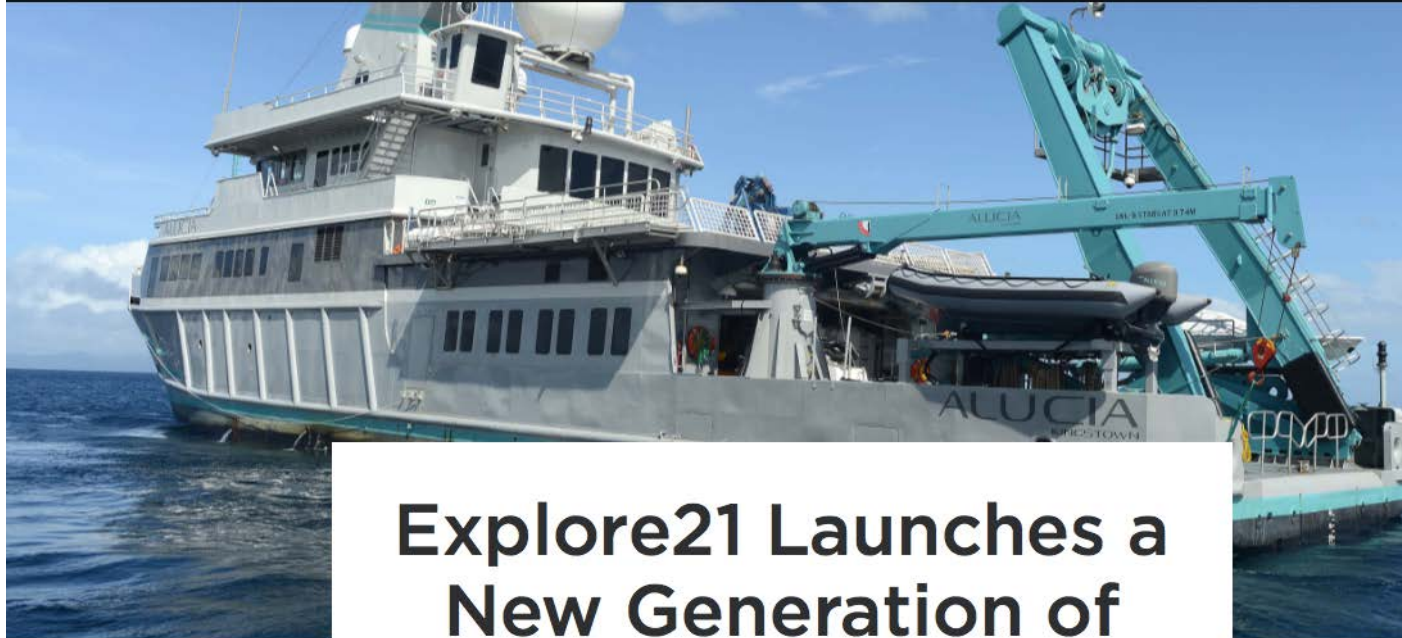
Constellation Information



SNAC

Users will be able to find
Archive materials by
exploring by Creator.





Explore21 Launches a New Generation of Expeditions

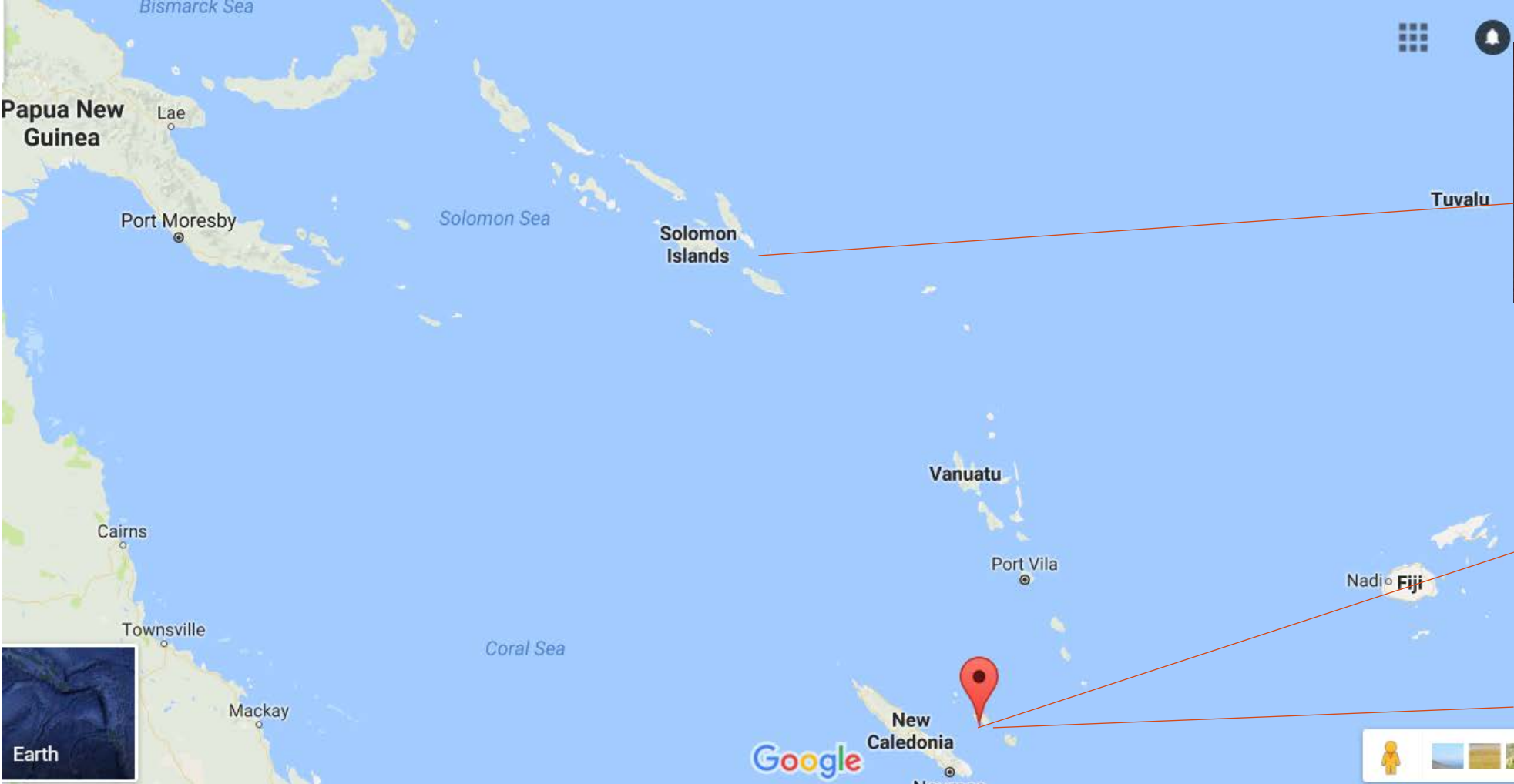
An expedition to study the life in the waters around the Solomon Islands launched a new generation of exploratory fieldwork under the banner of the Explore21 scientific initiative

NEW EXPEDITIONS!

How can we be proactive?



LOYALTY AND SOLOMON ISLANDS





BECCA MORGAN, SPECIAL COLLECTIONS ARCHIVIST
RMORGAN@AMNH.ORG
SPECIAL THANKS TO:

- Barbara Mathe, AMNH Museum Archivist (retired)
- My colleagues from the Field Book Project in all its iterations -- especially Leslie Parilla, Smithsonian Libraries and Christina Fidler at Berkeley MVZ.
- Michael Jones' writing on 'Boundary Materials' <http://mikejonesonline.com/index.html>
- Especially --- 'From Personal to Public: field books, museums, and the opening of the archives,' Archives and Records, Vol. 38, No. 2, 2017.



A FEW MORE LINKS . . .

- Shelf Life - Amazing and Fun Science Education shorts regularly using our collections:
- Erin Chapman (creator) -- <https://www.amnh.org/shelf-life>

- SNAC
 - <http://snaccooperative.org>

- The Field Book Project:
 - <http://nmnh.typepad.com/fieldbooks/>
 - <https://siarchives.si.edu/about/field-book-project>

- Our online community – outside of Internet Archive and DPLA
- <https://www.biodiversitylibrary.org>

